

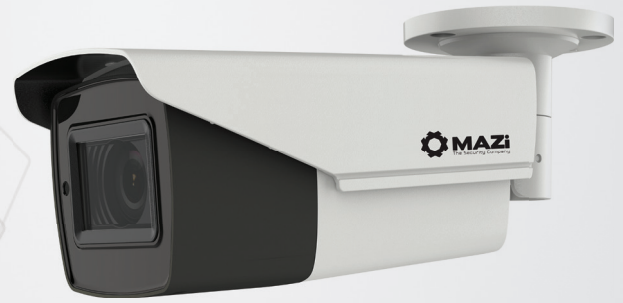
TWH-52MRD

HD TVI



KEY FEATURES

- 5 megapixel high-performance CMOS
- HD analog output, up to 5 MP resolution
- 2.7mm - 13.5mm motorized vari-focal lens
- True Day/Night
- OSD menu, DNR, Smart IR, dWDR
- EXIR technology, up to 40 m IR distance
- IP67
- Up the Coax



SPECIFICATION	TWH-52MRD
Camera	
Image Sensor	5 MP CMOS image sensor
Effective Pixels	2592 (H) × 1944 (V)
Min. illumination	Color: 0.01 Lux @ (F1.2, AGC ON), 0 Lux with IR
Shutter Time	PAL: 1/25 s to 1/50, 000 s
Lens	2.7mm ~ 13.5mm motorized vari-focal lens
Horizontal Field of View	95.7° to 29.1°
Lens Mount	Φ14
Day & Night	ICR
Angle Adjustment	Pan: 0° to 360°; Tilt: 0° to 90°; Rotate: 0° to 360°
Synchronization	Internal synchronization
Video Frame Rate	5 MP@20fps, 4 MP@25fps, 1080p@25fps
HD Video Output	1 HD analog output
Switch button	TVI/AHD/CVI/CVBS
Menu	
AGC	Support
D/N Mode	Auto/Color/BW (Black and White)
White Balance	ATW/MWB
BLC	Support
dWDR	Support
Language	English
Functions	Brightness, Sharpness, DNR, Mirror, Smart IR
General	
Operating Conditions	-40 °C to 60 °C, humidity: 90% or less (non-condensation)
Power Supply	12 V DC ±20% 24 V AC ±20%
Power Consumption	Max. 9 W
Protection Level	IP67
IR Range	Up to 40 m
Communication	Up the coax
Dimensions	84.5 mm × 92 mm × 255.1 mm
Weight	Approx. 705 g



Dimensions:

